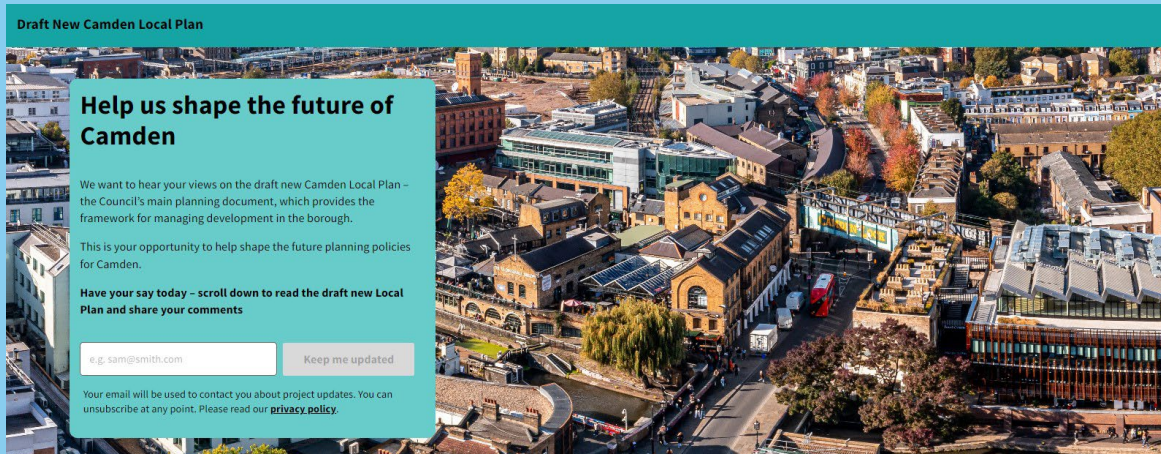


Planning Policy Newsletter

January 2024



Draft New Local Plan Published for Comment

The Council has published its draft new Local Plan and we want to hear the views of residents, businesses and community groups.

The draft new Local Plan sets out the Council's vision for future development in the borough for the next 15 years and includes planning policies and site allocations to help us achieve this.

The Plan aims to secure thousands of new homes and prioritise the delivery of genuinely affordable homes. It seeks to support Camden's successful economy, maximising opportunities for local people and businesses to share in its success. It also aims to enable high quality, inclusive and sustainable development which responds to the climate emergency and delivers benefits to meet the needs of our diverse communities whilst respecting and enhancing what's best about Camden.

So please take a look and let us know what you think so we can ensure Camden's Local Plan continues to deliver the best outcomes for the borough.



To find out more and comment on the draft new Local Plan you can visit our [Commonplace page](#) (shown above) or the Council's [website](#). Paper copies are also available at all our libraries. You can view the library [opening times online](#). You can also comment on the draft Plan by emailing PlanningPolicy@camden.gov.uk

We will also be hosting a series of online public engagement sessions, where Council officers will present information about the Plan and respond to any comments or queries:

- **Overview of the Local Plan, Housing and Site Allocations** - Thursday, 1 February 2024, 7 to 9pm.
- **Inclusive Economy, Town Centres, Communities, Infrastructure and Transport** - Wednesday, 7 February 2024, 7 to 9pm.
- **Climate Change, Environment and Design** – Tuesday, 13 February 2024, 7 to 9pm.

All events will be hosted on Microsoft Teams and you can register to attend on our website Camden Local Plan Consultation (councilsuk.live)

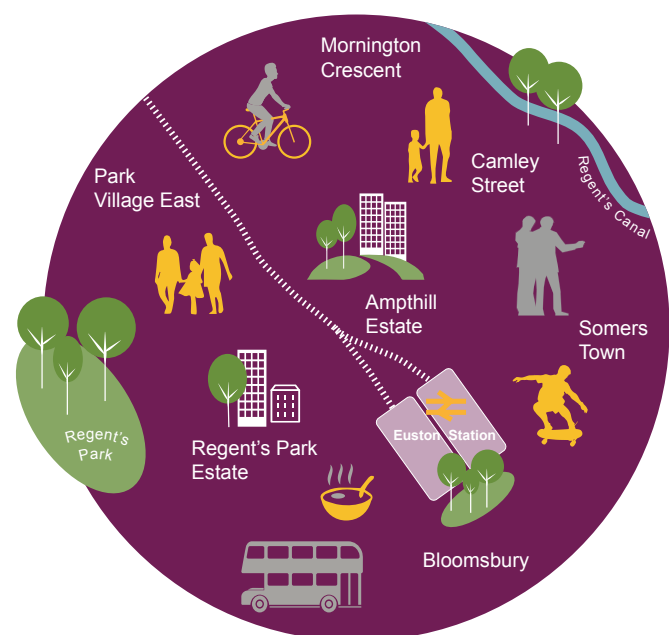
Responses on the draft Local Plan should be submitted by 5pm Wednesday 13 March 2024.

Work restarting on Euston Area Plan Update

After our initial consultation on proposed updates to the [Euston Area Plan \(EAP\)](#) in January 2023, work on the plan was paused while HS2 worked on different station options as part of a cost cutting exercise at Euston. As the Government announced in October 2023 that HS2 will come to Euston but that they expect the station and tracks to be funded privately, the Council is restarting work on the update to the EAP.

Our work on the Plan will be focused on the chapters covering Euston Station and Camden Cutting providing guidance for the key strategic options that may come forward under this new approach to delivery. We are currently working with the delivery organisations to understand what the strategic options might look like. Comments received as part of earlier discussions and consultation responses will be considered as part of this process.

Our current timetable includes additional ('Regulation 18') consultation on a revised draft in Summer 2024 and submission for examination by June 2025. Further information about the EAP can be found on the [website](#).



Still Time to Have Your Say on the draft Statement of Community Involvement

Consultation on the Council's draft updated Statement of Community Involvement (SCI) closes on the 31 January 2024.

The Statement of Community Involvement sets out how we will involve and engage local people, local businesses and other key organisations and stakeholders when we prepare our planning policies and consider planning applications.

The updated Statement of Community Involvement sets out –

- Our approach to involving the community in planning and who we will seek to involve in planning matters
- How we will engage seldom heard and previously under-represented communities in planning
- How we will involve the community in preparing our planning policies, for example the Local Plan, and who we will involve
- How we will support and assist Neighbourhood Forums with the preparation of Neighbourhood Plans
- How we will involve the community in planning applications
- How we will resource community involvement in planning matters

To find out more and share your views on the document please visit and comment via [Have Your Say Today Draft Statement Of Community Involvement - Commonplace](#) or view a copy of the Statement of Community Involvement [online](#).

Responses should be emailed to PlanningPolicy@camden.gov.uk by the 31 January 2024.

Further consultation on Holborn Vision

Work on the Holborn Vision has recommenced and engagement is expected to begin in February 2024.

Consultation on the draft Holborn Vision and Urban Strategy took place in Spring/ Summer 2019. Over 100 questionnaires were returned, 27 pieces of written feedback from organisations, business and individuals were received and over 60 participants attended the drop-in events at Holborn Library. A report of the consultation is published on the Council's [website](#).

Work on the document paused in 2020 due to the pandemic which had significant implications for Holborn. In particular, the uncertainty around Transport for London's (TfL's) funding situation had a direct impact on a proposed new entrance at Holborn Underground station and the Holborn Liveable Neighbourhoods public realm project.

The Council believes that step-free access and increased capacity at Holborn Underground station are needed and will do what it can to promote this important project that is not currently in TfL's programme. However, funding for Holborn Liveable Neighbourhoods is confirmed for concept design, traffic modelling and consultation. Engagement on the draft Vision is expected to recommence this year building on the 2019 draft and the comments received.



Bloomsbury Vision to be published

The Council has begun working with key landowners (University of London, UCL, Birkbeck and British Museum) to develop a Bloomsbury Vision for the area immediately to the north of the Holborn Vision boundary. This will build on the Bloomsbury Green Corridor proposal to create a pedestrian friendly network and green links between open spaces, institutions and transport hubs connecting Euston to the River Thames.

The Bloomsbury Vision is not expected to be adopted as an supplementary planning document (SPD) but will form a public realm strategy shared by the landowners. It will need to closely align with the Holborn Vision and consultation on the draft document is anticipated to follow shortly after Holborn, likely to be in summer 2024.

Launch of a Camden Town Vision

The Council has also begun preparing a Camden Town Vision. Numerous successful projects have already been delivered in Camden Town including the 2021 Housing Design Awards overall winner at Hawley Wharf. Further projects are in development or under construction but a clear vision and strategy will help define, coordinate and prioritise future projects.

The Vision will aim to guide future growth to ensure Camden Town is a successful, attractive, safe and sustainable place. Input from our communities and partners will be sought with consultation starting in the Summer.