

LINKED MODEL SCHEDULE

HEALTH & SAFETY:

ALL WORKS TO BE CARRIED OUT BY A CONTRACTOR COMPETENT TO UNDERTAKE THE CONSTRUCTION OF WORKS AS INDICATED ON THIS DRAWING. THIS DRAWING IS TO BE READ IN CONJUNCTION WITH THE JOB SPECIFIC RISK ASSESSMENT. THE HAZARDS NOTED ARE IN ADDITION TO THE NORMAL HAZARDS AND RISKS FACED BY A COMPETENT CONTRACTOR WHEN DEALING WITH THE TYPE OF WORKS DETAILED ON THIS DRAWING.

NOTES

1. THIS DRAWING IS COPYRIGHT.
2. DO NOT SCALE THIS DRAWING. THE CONTRACTOR IS TO BRING TO THE NOTICE OF THE ENGINEER ANY DISCREPANCIES CONTAINED IN THIS DRAWING PRIOR TO WORK COMMENCEMENT.
3. THIS DRAWING IS TO BE READ IN CONJUNCTION WITH ALL RELEVANT ARCHITECTS, ENGINEERS AND SPECIALIST SUB-CONTRACTORS DRAWINGS AND THE SPECIFICATION.
4. ALL SETTING OUT TO BE IN ACCORDANCE WITH THE ENGINEERS DRAWINGS. CONTRACTOR TO CHECK AND IDENTIFY ANY DISCREPANCIES TO ENGINEER. DIMENSIONS MUST NOT BE SCALED.

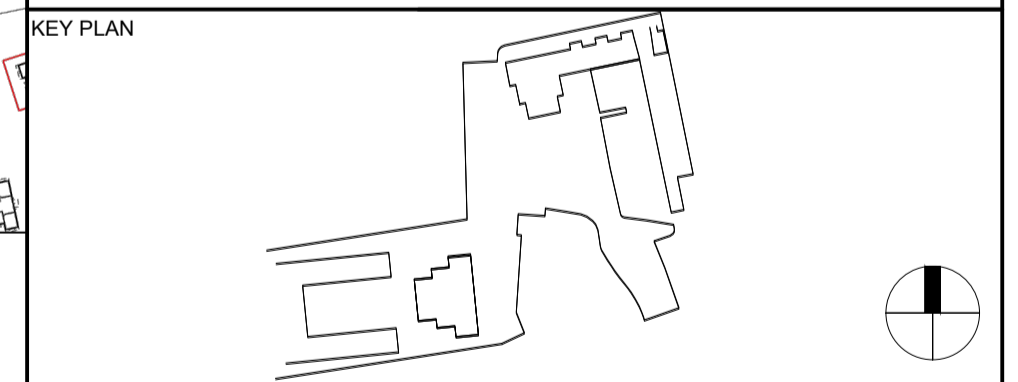
| | | | | |
|----|----|----------|-----------------------------------|----|
| S1 | P2 | 25.09.20 | UPDATED TO SUIT REVISED HAUL ROAD | PJ |
| S1 | P1 | 10.09.20 | PRELIMINARY ISSUE | PJ |

ALL REVISIONS

MAIN CONTRACTOR

Bouygues UK
Beckett House
1 Lambeth Palace Rd
Lambeth, London SE1 7EU
Tel: 020 7401 0020

CLIENT LOGO



ORIGINATOR

Hampshire Office:
Desley House, 55 High Street,
Ringwood, Hampshire BH24 1AE
Telephone: 01425 484400
Facsimile: 01425 484409
Email: admin@reuby-stagg.co.uk

PROJECT NAME
MAITLAND PARK REDEVELOPMENT

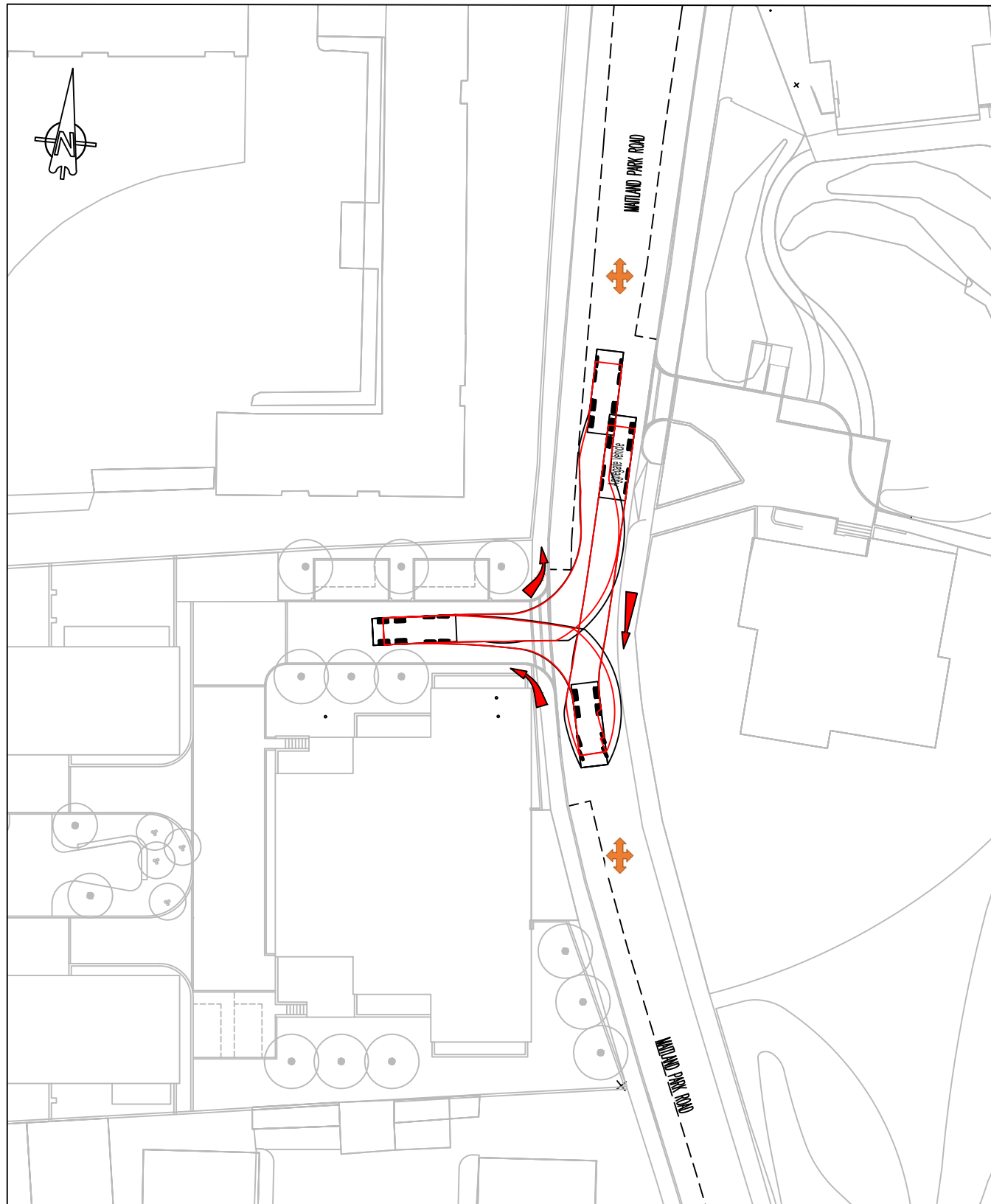
DRAWING TITLE
GRAFTON TERRACE - HAUL ROAD SWEEP PATH ANALYSIS

SCALE @ A1: 1:250

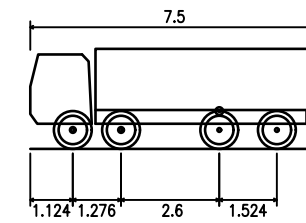
MODEL FILE NAME - REVISION

| | | |
|------------------|---------------|--------------------------------|
| FIRST ISSUE DATE | PROJECT STAGE | STATUS CODE |
| 10/09/2020 | Stage 4 | S1 - Suitable for Coordination |

| PROJECT | ORIGINATOR | VOLUME | LEVEL | TYPE | ROLE | NUMBER | REV |
|---------|------------|--------|-------|------|------|--------|-----|
| MPR | RAS | GT | XX | GA | C | 000214 | P02 |



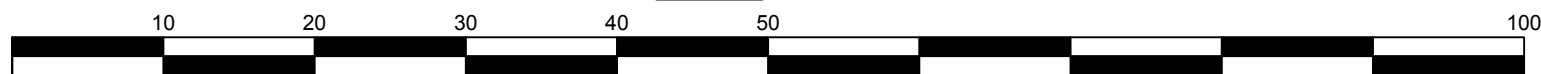
VEHICLE DETAILS AND LEGEND



| | |
|-----------------------------|--------|
| Aggregate Vehicle | |
| Overall Length | 7.500m |
| Overall Width | 2.400m |
| Overall Body Height | 2.881m |
| Min Body Ground Clearance | 0.332m |
| Track Width | 2.400m |
| Lock to Lock Time | 4.00s |
| Kerb to Kerb Turning Radius | 8.600m |

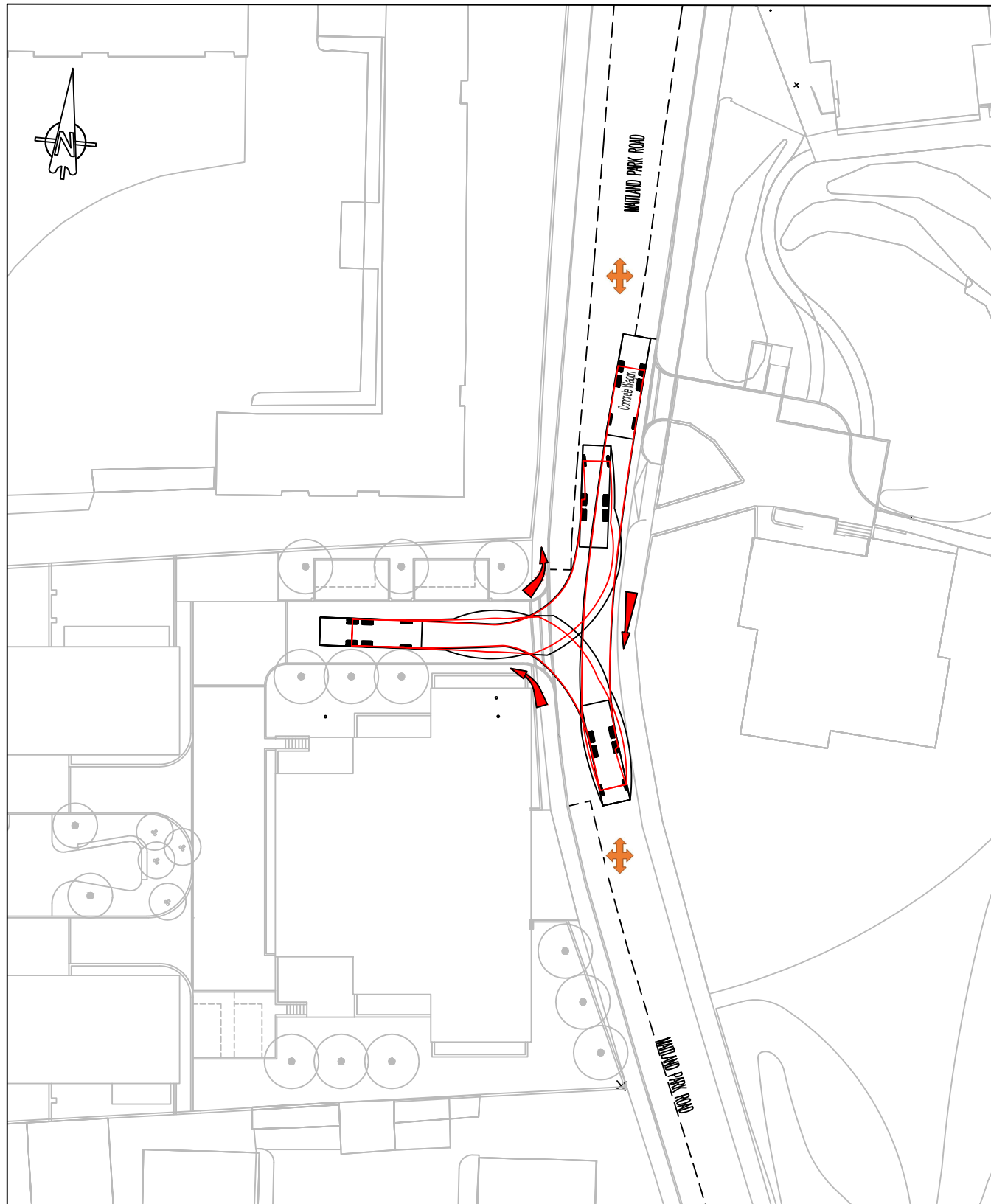
- Wheel Outline
- Body Outline
- Proposed Path
- ✚ Traffic Marshal Positions

SCALE:

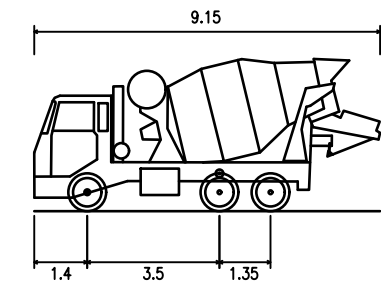


| | | | |
|-----|----------|---|----------|
| P2 | 18.05.20 | TRAFFIC MARSHALL POSITIONS ADDED, TRACKING REVISED TO AVOID PARKING BAYS PRELIMINARY ISSUE | JP JP |
| P1 | 16.04.20 | | |
| rev | date | description | initials |

| | | | |
|---------------|--------|---------------------------------------|-------------|
| Project | | Title | |
| MAITLAND PARK | | SWEPT PATH ANALYSIS AGGREGATE VEHICLE | |
| date | APR 20 | scale | size |
| drawn | JP | 1:500 | A3 |
| checked | MPD | project no. | drawing no. |
| | | 10456 | 207 |
| | | revision | P2 |



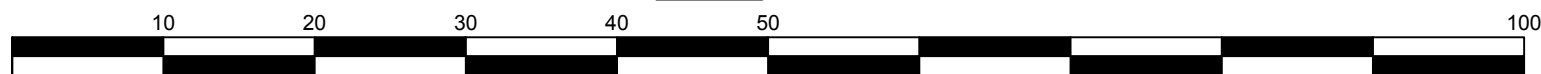
VEHICLE DETAILS AND LEGEND



| | |
|-----------------------------|--------|
| Concrete Wagon | |
| Overall Length | 9.150m |
| Overall Width | 2.500m |
| Overall Body Height | 4.027m |
| Min Body Ground Clearance | 0.358m |
| Max Track Width | 2.413m |
| Lock to Lock Time | 5.00s |
| Kerb to Kerb Turning Radius | 9.000m |

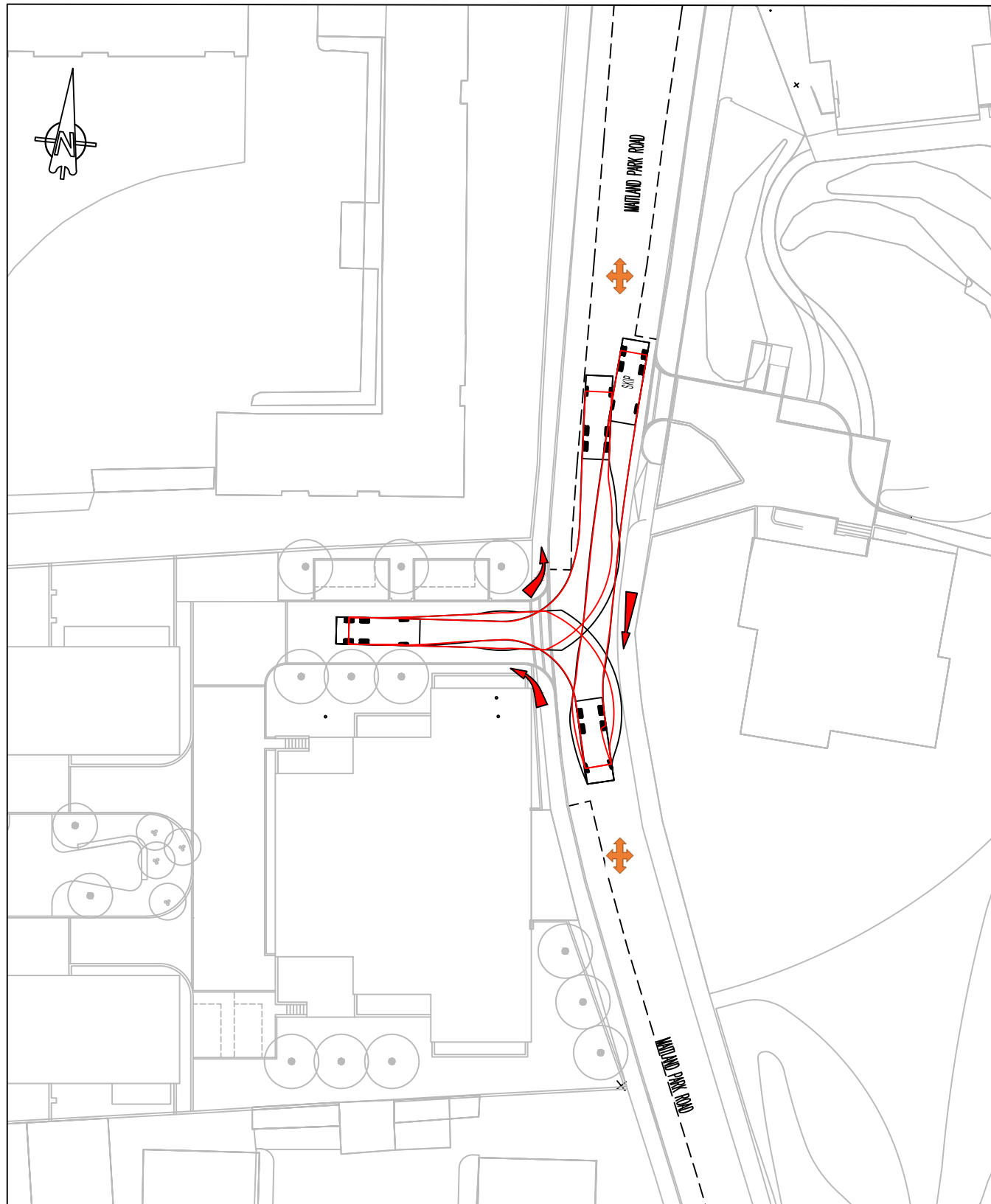
- Wheel Outline
- Body Outline
- ➔ Proposed Path
- ✚ Traffic Marshal Positions

SCALE:

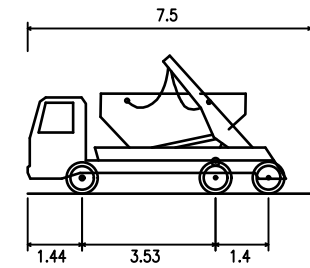


| | | | |
|-----|----------|---|----------|
| P2 | 18.05.20 | TRAFFIC MARSHALL POSITIONS ADDED, TRACKING REVISED TO AVOID PARKING BAYS PRELIMINARY ISSUE | JP JP |
| P1 | 16.04.20 | | |
| rev | date | description | initials |

| | | | |
|---------------|--------|------------------------------------|-------------|
| Project | | Title | |
| MAITLAND PARK | | SWEPT PATH ANALYSIS CONCRETE WAGON | |
| date | APR 20 | scale | size |
| drawn | JP | 1:500 | A3 |
| checked | MPD | project no. | drawing no. |
| | | 10456 | 208 |
| | | revision | P2 |



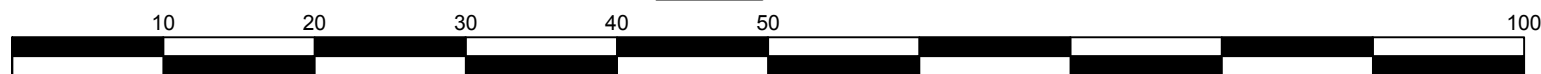
VEHICLE DETAILS AND LEGEND



| | |
|------------------------------|--------|
| SKIP | |
| Overall Length | 7.500m |
| Overall Width | 2.400m |
| Overall Body Height | 3.650m |
| Min Body Ground Clearance | 0.396m |
| Max Track Width | 2.400m |
| Lock to Lock Time | 6.00s |
| Max Steering Angle (Virtual) | 36.30° |

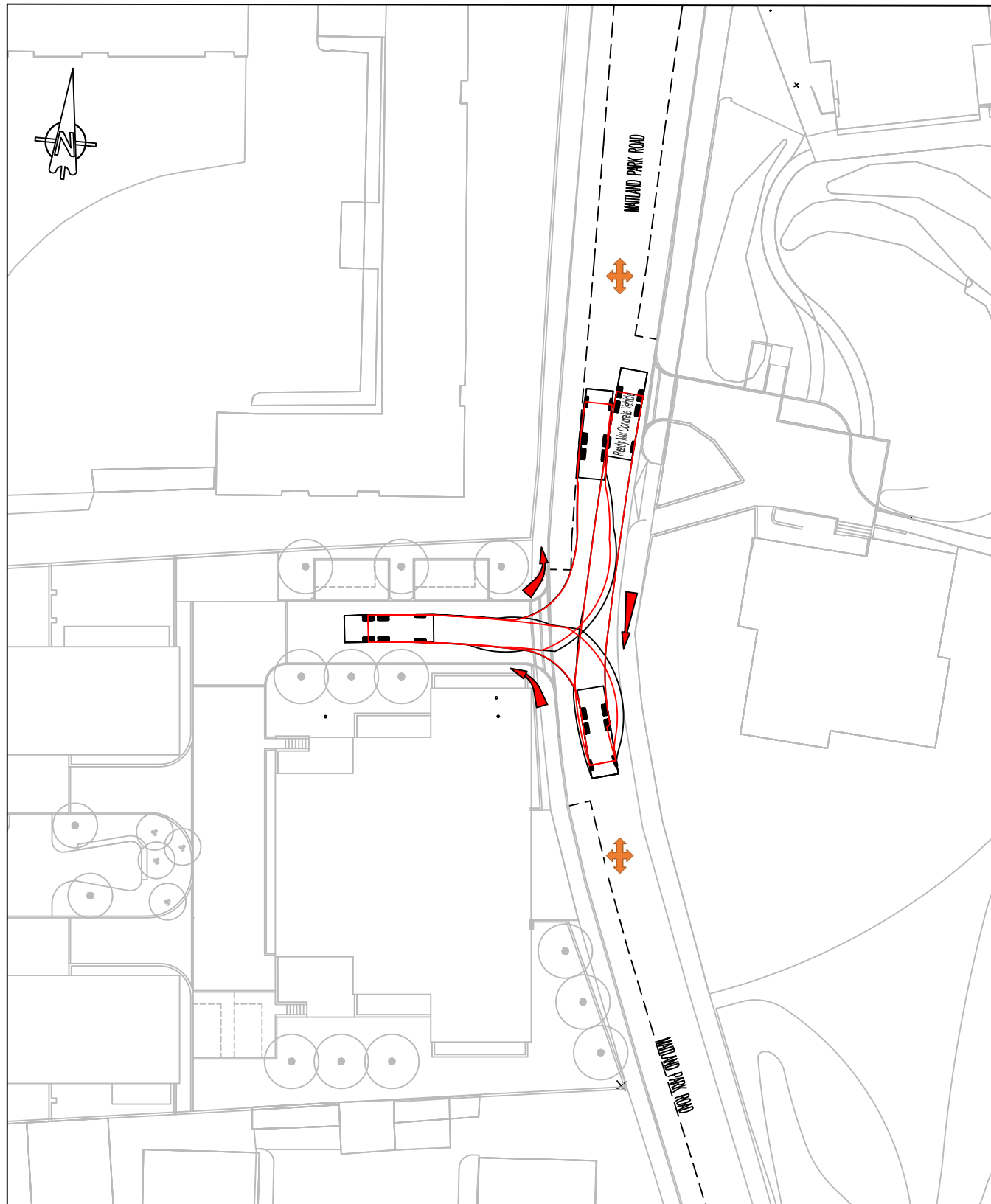
- Wheel Outline
- Body Outline
- Proposed Path
- Traffic Marshal Positions

SCALE:

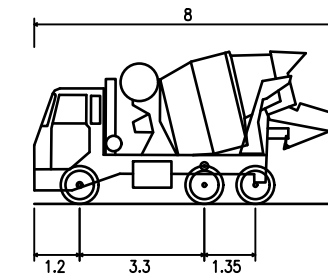


| | | | |
|-----|----------|---|----------|
| P2 | 18.05.20 | TRAFFIC MARSHALL POSITIONS ADDED, TRACKING REVISED TO AVOID PARKING BAYS PRELIMINARY ISSUE | JP JP |
| P1 | 16.04.20 | | |
| rev | date | description | initials |

| | | | |
|---------------|--------|--------------------------|-------------|
| Project | | Title | |
| MAITLAND PARK | | SWEPT PATH ANALYSIS SKIP | |
| date | APR 20 | scale | size |
| drawn | JP | 1:500 | A3 |
| checked | MPD | project no. | drawing no. |
| | | 10456 | 213 |
| | | revision | P2 |



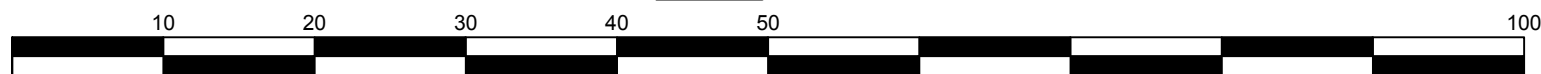
VEHICLE DETAILS AND LEGEND



| | |
|-----------------------------|--------|
| Ready Mix Concrete Vehicle | |
| Overall Length | 8.000m |
| Overall Width | 2.400m |
| Overall Body Height | 4.027m |
| Min Body Ground Clearance | 0.358m |
| Track Width | 2.400m |
| Lock to Lock Time | 5.00s |
| Kerb to Kerb Turning Radius | 9.000m |

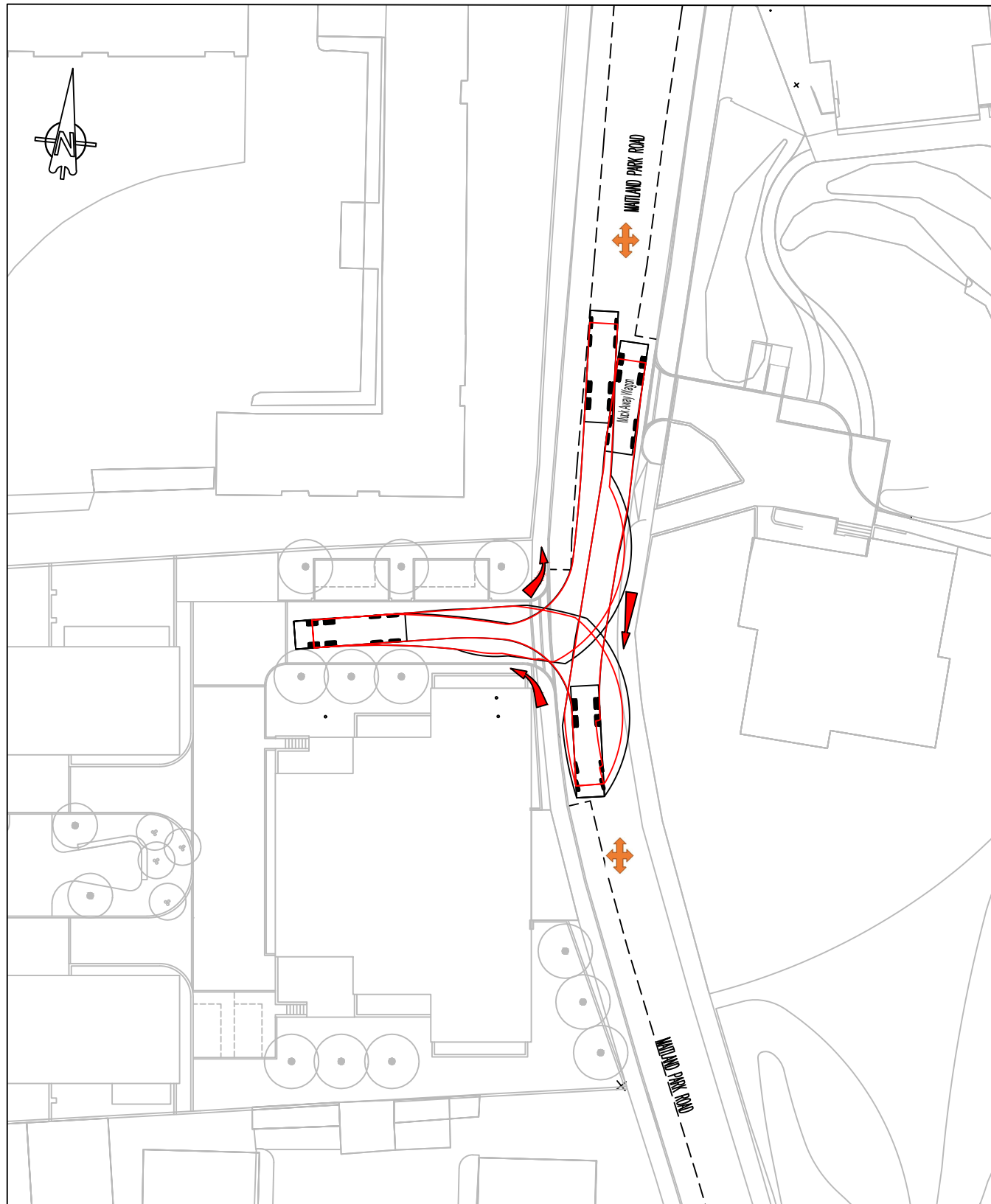
- Wheel Outline
- Body Outline
- ▶ Proposed Path
- ✚ Traffic Marshal Positions

SCALE:

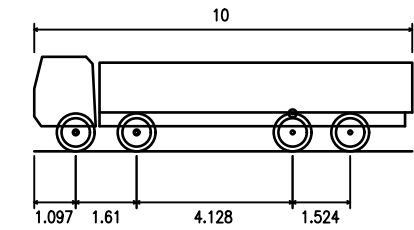


| | | | |
|-----|----------|---|----------------------|
| P2 | 18.05.20 | TRAFFIC MARSHALL POSITIONS ADDED, TRACKING REVISED TO AVOID PARKING BAYS PRELIMINARY ISSUE | JP JP initials |
| P1 | 16.04.20 | | |
| rev | date | description | |

| | | | | | | | |
|---------|--------|---------------|-------|-------|----|---|-------|
| Project | | MAITLAND PARK | | Title | | SWEPT PATH ANALYSIS READY MIX CONCRETE VEHICLE | |
| date | APR 20 | scale | 1:500 | size | A3 | project no. | 10456 |
| drawn | JP | | | | | drawing no. | 212 |
| checked | MPD | | | | | revision | P2 |



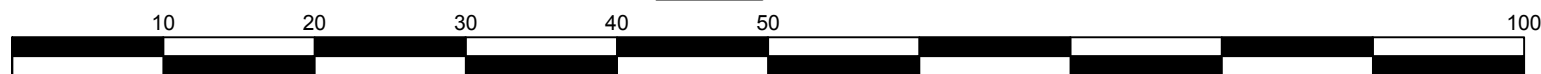
VEHICLE DETAILS AND LEGEND



| | |
|-----------------------------|---------|
| Muck Away Wagon | |
| Overall Length | 10.000m |
| Overall Width | 2.500m |
| Overall Body Height | 2.893m |
| Min Body Ground Clearance | 0.343m |
| Track Width | 2.500m |
| Lock to Lock Time | 6.00s |
| Kerb to Kerb Turning Radius | 11.550m |

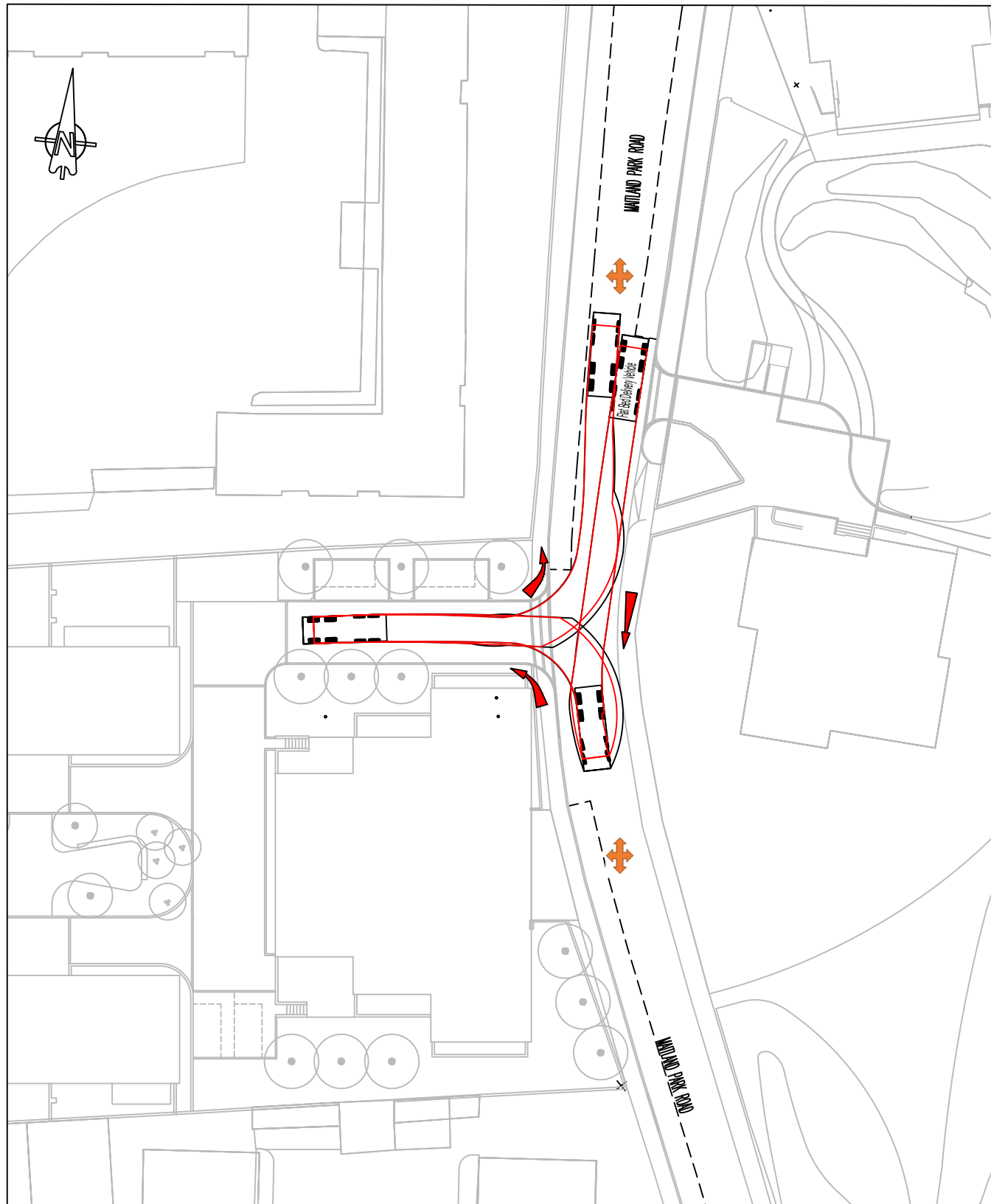
- Wheel Outline
- Body Outline
- Proposed Path
- ✚ Traffic Marshal Positions

SCALE:

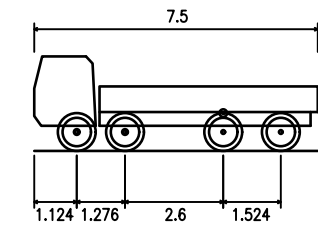


| | | | |
|-----|----------|---|----------|
| P2 | 18.05.20 | TRAFFIC MARSHALL POSITIONS ADDED, TRACKING REVISED TO AVOID PARKING BAYS PRELIMINARY ISSUE | JP JP |
| P1 | 16.04.20 | | |
| rev | date | description | initials |

| | | | | | | | | | | | |
|---------|----------------------|---------|-------|--|----|-------------|-------|-------------|-----|----------|----|
| Project | MAITLAND PARK | | Title | SWEPT PATH ANALYSIS MUCK AWAY WAGON | | | | | | | |
| date | APR 20 | scale | 1:500 | size | A3 | project no. | 10456 | drawing no. | 211 | revision | P2 |
| drawn | JP | checked | MPD | | | | | | | | |



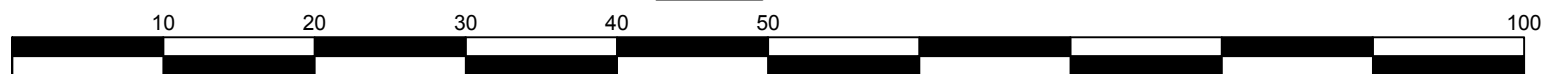
VEHICLE DETAILS AND LEGEND



Flat Bed Delivery Vehicle
 Overall Length 7.500m
 Overall Width 2.400m
 Overall Body Height 2.881m
 Min Body Ground Clearance 0.332m
 Track Width 2.400m
 Lock to Lock Time 6.00s
 Kerb to Kerb Turning Radius 10.000m

- Wheel Outline
- Body Outline
- ➔ Proposed Path
- ✕ Traffic Marshal Positions

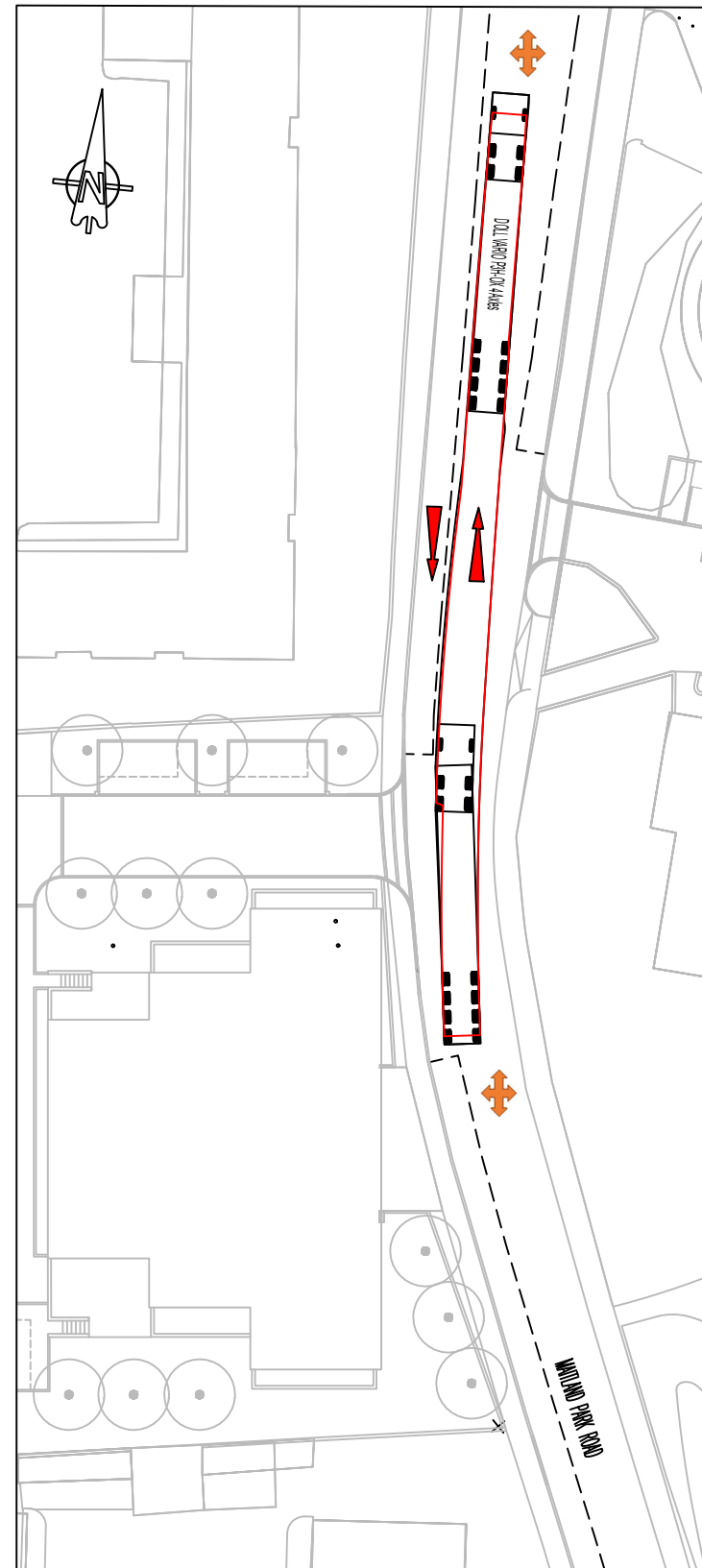
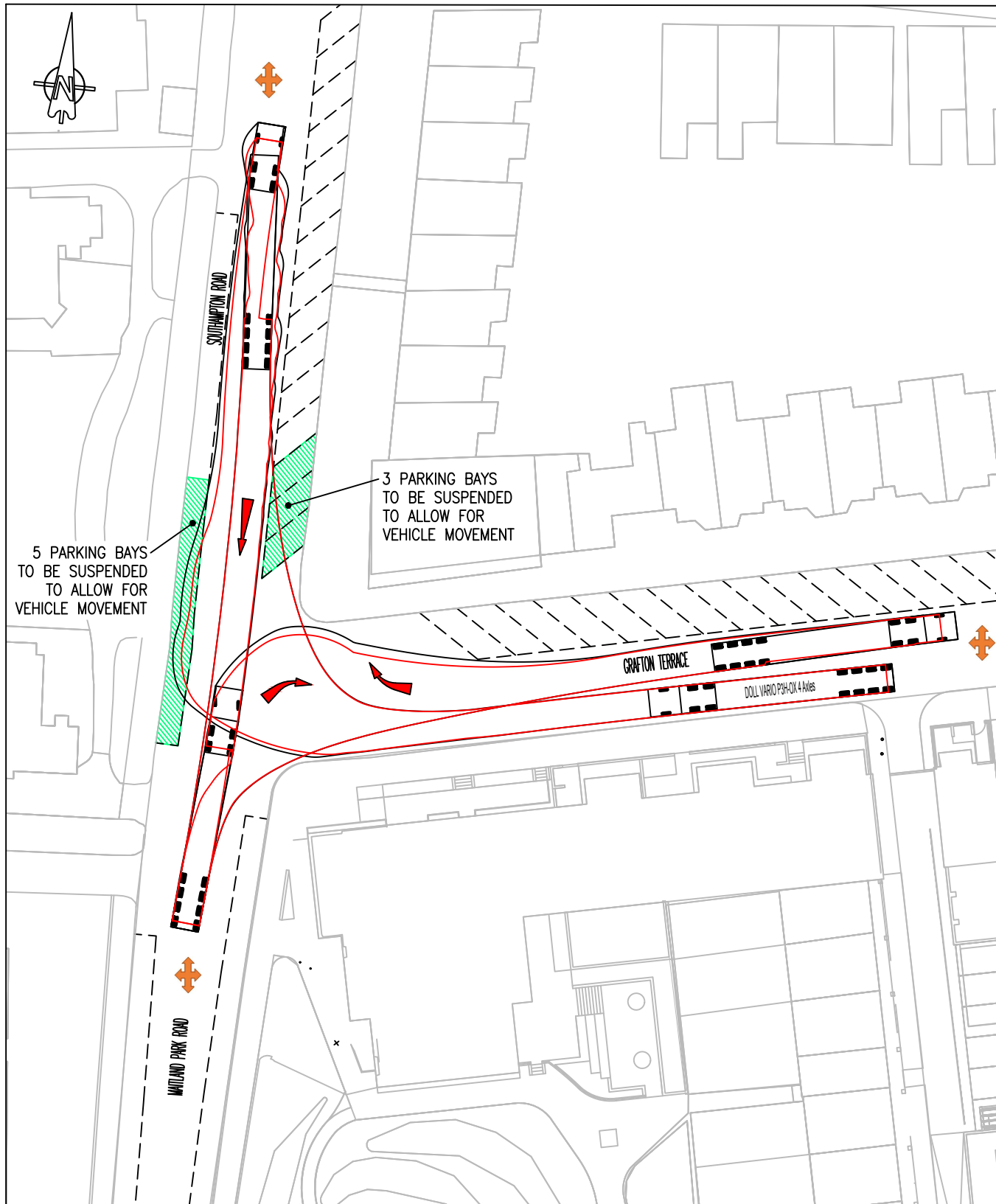
SCALE:



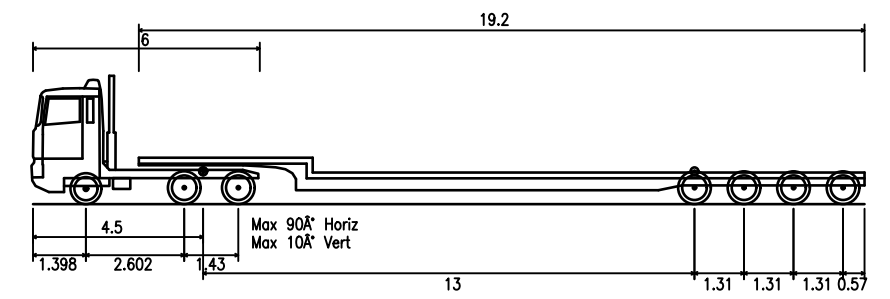
| | | | |
|-----|----------|---|----------|
| P2 | 18.05.20 | TRAFFIC MARSHALL POSITIONS ADDED, TRACKING REVISED TO AVOID PARKING BAYS PRELIMINARY ISSUE | JP JP |
| P1 | 16.04.20 | | |
| rev | date | description | |

| | | | |
|---------|----------------------|-------|--|
| Project | MAITLAND PARK | Title | SWEPT PATH ANALYSIS FLAT BED DELIVERY VEHICLE |
|---------|----------------------|-------|--|

| | | | | | | | | | | | |
|---------|--------|-------|-------|------|----|-------------|-------|-------------|-----|----------|----|
| date | APR 20 | scale | 1:500 | size | A3 | project no. | 10456 | drawing no. | 210 | revision | P2 |
| drawn | JP | | | | | | | | | | |
| checked | MPD | | | | | | | | | | |



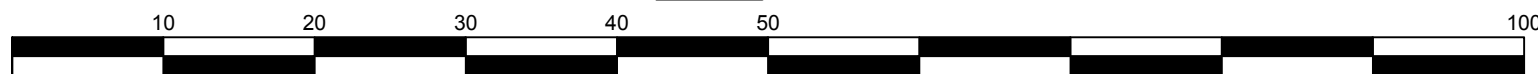
VEHICLE DETAILS AND LEGEND



DOLL VARIO P3H-OX 4 Axles
 Overall Length 22.000m
 Overall Width 2.490m
 Overall Body Height 3.396m
 Min Body Ground Clearance 0.320m
 Max Track Width 2.479m
 Lock to Lock Time 6.00s
 Kerb to Kerb Turning Radius 6.790m

- Wheel Outline
- Body Outline
- ▶ Proposed Path
- ✚ Traffic Marshal Positions

SCALE:



| rev | date | description | initials |
|-----|----------|--|----------|
| P3 | 18.05.20 | TRAFFIC MARSHALL POSITIONS ADDED | JP |
| P2 | 11.05.20 | PARKING BAYS ADDED, TRACKING REVISED TO SUIT | JP |
| P1 | 16.04.20 | PRELIMINARY ISSUE | JP |

| | | | |
|---------|----------------------|-------|--|
| Project | MAITLAND PARK | Title | SWEPT PATH ANALYSIS DOLL VARIO P3H-OX 4 AXLES |
|---------|----------------------|-------|--|

| | | | | | | | | | | | |
|---------|--------|-------|-------|------|----|-------------|-------|-------------|-----|----------|----|
| date | APR 20 | scale | 1:500 | size | A3 | project no. | 10456 | drawing no. | 209 | revision | P3 |
| drawn | JP | | | | | | | | | | |
| checked | MPD | | | | | | | | | | |