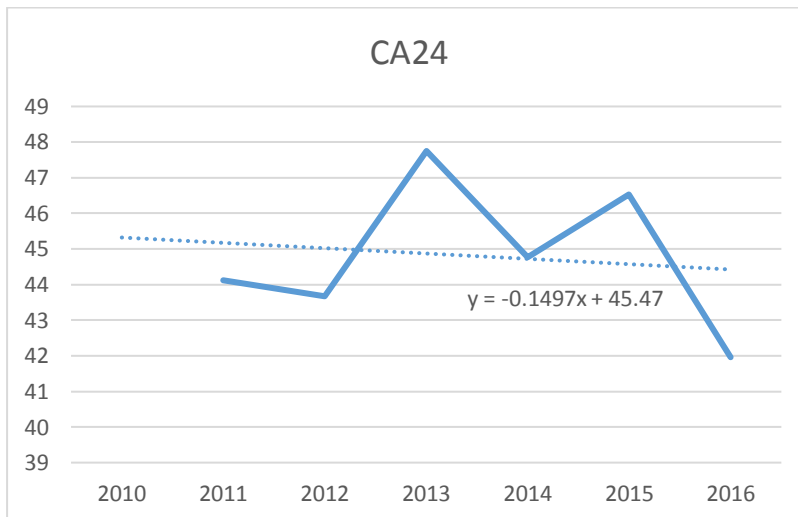
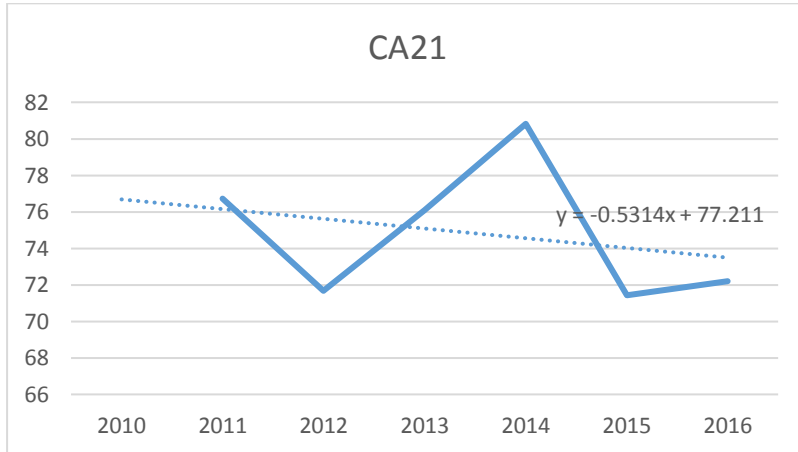


Additional backdated 2010 figures for CA21 and CA24

Site	2010
CA21	76.68 $\mu\text{g}/\text{m}^3$
CA24	45.32 $\mu\text{g}/\text{m}^3$



Three tables below:

1. Expansion of the Trial area to include CA4 and backdated CA21
2. All other sites (including backdated CA24)
3. All sites

Note:

- Figures are nitrogen dioxide NO₂ in µg/m³
- Highlighted cells indicate backdated figures for 2010 using trend lines

Table 1: Expansion of the Trial area to include CA4 and backdated CA21

	2010	2016
CD9	124.263	88
LB	55	42
CA10	52	39.68
CA6	34	31.31
CA4	82	82.71
CA21	76.68	72.2

Overall	70.66	59.32
----------------	--------------	--------------

Reduction
16.05%

Table 2: All other sites (included backdated CA24)

	2010	2016
CA7	29	27.91
CA11	92	83.57
CA15	71	73.86
CA16	74	58.72
CA17	73	56.38
CA20	54	47.53
CA23	84	61.74
CA24	45.32	41.96
CA25	44.0187	52.18
WITT	62.315	43.11
CD1	82	66
CD3	89	84

Overall	66.64	58.08
----------------	--------------	--------------

Reduction
12.84%

Table 3: All sites (including newly backdated CA21 and CA24)

	2010	2016
CA4	82	82.71
CA6	34	31.31
CA7	29	27.91
CA10	52	39.68
CA11	92	83.57
CA15	71	73.86
CA16	74	58.72
CA17	73	56.38
CA20	54	47.53
CA21	76.68	72.2
CA23	84	61.74
CA24	45.32	41.96
CA25	44.0187	52.18
WITT	62.315	43.11
LB	55	42
CD1	82	66
CD3	89	84
CD9	124.263	88

Overall	67.98	58.49
----------------	--------------	--------------

Reduction
13.95%